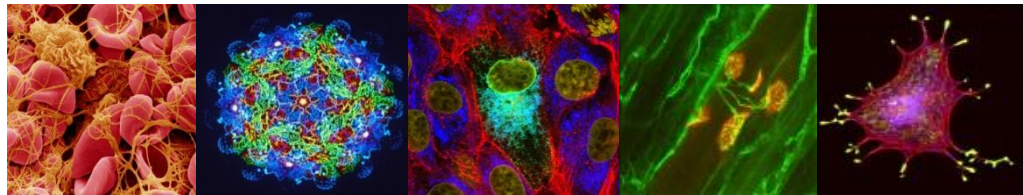


Home Office ASRU/ Society of Biology ASG Meeting

Improving animal research: Reporting animal
research-data sharing

Nancy Lee
Senior Policy Adviser
Policy Department



Data sharing- a funder's view

- Commitment to maximising the value of data generated from research- including research using animals
- Appropriate reporting of outputs can:
 - Enhance study design;
 - Avoid duplication; and
 - Reduce animals used.
- Commitment of sector required to address data sharing challenges



Sharing animal models and research outputs

- Promotion of use of existing animal models and interrogation of existing data:
 - INFRFRONTIERS/EMMA, IMPC
 - Encouragement to develop research and analysis tools to better interrogate existing data generated from research using animal models.
- Sharing research data:
 - eTRIKS, FigShare, Dryad-however data unstructured- challenge of solutions for data discoverability

Publication of results

Issues:

- Publication of results
 - Data sharing: critical to enhancing reproducibility
 - Improves quality of future work, maximises knowledge already gained
- Challenges:
 - Little incentive and few avenues to publish 'negative' or 'null' findings.

Emerging issues and challenges

- How can we incentivise publication of results
- Can we develop a vocabulary flexible enough to include all research results in a format easily interrogated across various areas of research?
- Which aspects should funders seek to take a lead, and which should we look to the community to lead?

Current and upcoming initiatives:

- eLife: Reproducibility Project
- AMS/BBSRC/MRC/WT Symposium on 'Reproducibility and reliability of biomedical research'.
- NC3Rs: 'Publication bias' workshop