

Naomi Smith

From: Royal Society of Biology Training <Society.of.Biology@cmp.dotmailer.co.uk>
Sent: 17 February 2017 11:01
To: Naomi Smith
Subject: Training & Personal Development Newsletter January 2016



[Open this email in a web browser](#)
[Manage your subscriptions](#)

Training and Personal Development



February 2017

Last month, we held our ever-popular [Persuasive Scientific Report Writing](#) course. As always, we received great feedback from the course participants who described it as "a really well structured training day with practical tips that will help in my workplace" and "very useful for anybody who needs to write scientific documents." We plan to run this course again later this year or early next year, so keep a look out on our [upcoming events](#) page if you are interested.

This month we will be running our new [Laboratory Health and Safety Training course](#) in Newcastle. This course is almost fully booked, so please [book your place](#) as soon as possible, if you would like to attend and have not yet booked your place. Coming up in March are our popular courses on [Science Podcast Production](#) and [Writing for Non-Specialist Audiences](#). Please see our website for a full list of our [upcoming courses](#).

Attending a training course can develop your

About our training support for organisations

The Royal Society of Biology supports our member organisations, their staff and members through the provision of training and a personalised continuing professional development ([CPD](#)) system.

We offer courses to suit a range of interests and competencies, from entry and early career biologists to senior and expert professionals in their field. Our aim is to promote an interest and engagement in biology and enable individuals to develop a personal lifelong learning journey relevant to their career and professional goals.

As part of our commitment of ensuring that training provided by the RSB is a benefit for your staff and members, discounts of up to 50% of the full price training fees are available to all staff and members of our [Member Organisations](#).

We are also expanding our in-house training

skills and knowledge and provide opportunities for you to network and learn from others. All of our training courses are evaluated to ensure continued high quality. All attendees who complete our training courses will receive a certificate of attendance and achieve CPD points that count towards our [CPD scheme](#).

provision for our Member Organisations.

To enquire about receiving in-house training at your organisation please contact training@rsb.org.uk



Best Wishes,

Naomi Smith

Training Officer

training@rsb.org.uk

Share this newsletter:



Upcoming training courses

Free one-day public engagement training for bioscientists

When: Various dates throughout the UK January – April 2017

The Royal Society of Biology and the Biochemical Society are excited to offer free one-day training events for students and early career members. This special training course, delivered by public engagement experts [Science Made Simple](#), will allow attendees to gain knowledge and skills that will enable them to deliver biology-related hands-on activities at public events in their area.



Please [contact us](#) for further details.

Laboratory Health and Safety Training

When: 28 February 2017 (full day course)

Where: Newcastle University, NE2 4HH

What: This course will include: Essentials of risk assessment (focusing in particular on COSHH Regulations), aspects of spills management in laboratories, accident investigation, and audits and safety inspections.

Trainer: Lindsay Murray FRSB CSci CBiol, is a graduate microbiologist with more than thirty years of practical experience in clinical and teaching laboratories. He is currently a health & safety manager at The University of Edinburgh's College of Medicine & Veterinary Medicine.

Who: This training course is for those working in, or interested in, biological containment laboratories or supervisory and laboratory management roles.

CPD: This event has been approved by the Royal Society of Biology for purposes of CPD and can be counted as 13.5 CPD points.



Fees: From £100 + VAT

Please see the event webpage for [further info and booking](#).

Science Podcast Production Workshop

When: 16 March 2017 (full day course)

Where: Charles Darwin House 2, 107 Gray's Inn Road, London WC1X 8TZ

What: Award-winning science broadcaster Richard Hollingham presents this introductory hands-on course on how to podcast - from getting good quality sound and content, to getting your podcast online and heard.

Trainer: Richard Hollingham studied Applied and Environmental Biology at the University of York and went on to become a BBC producer, reporter and presenter. Past projects include presenting the BBC World Service environment programme *One Planet* and the acclaimed *Planet Earth* Podcast for the Natural Environment Research Council. Richard produces and presents science programmes for Radio 4, World Service and Radio 3, writes for BBC Future and is co-presenter/producer of the award-winning *Space Boffins* Podcast.

Who: For those interested in communicating science via podcast.

CPD: This event has been approved by the Royal Society of Biology for purposes of CPD and can be counted as 18 CPD points.

Fees: From £125 +VAT

Please see the event webpage for [further info and booking](#).



Writing for a Non-Specialist Audience

When: 23 March 2017 (full day course)

Where: Charles Darwin House 2, 107 Gray's Inn Road, London WC1X 8TZ

What: Learn how to write in an interesting and easy-to-read way, while ensuring your message remains scientifically robust and accurate.

Tutors: Dr Rebecca Nesbit MRSB is a science press officer with a particular interest in blogging and online communications. She works on the communications for the Nobel Prizes, and her previous roles include press officer at the Royal Society of Biology, PR consultant for science and tech companies, and teaching honeybees to detect explosives.

Tom Ireland MRSB is an award winning journalist and editor specialising in science, health and society, who has written for *The Observer*, *Scientific American* and *The Biologist*. He is managing editor at the Royal Society of Biology.

Who: For scientists in academia or industry hoping to improve the way they communicate with non-scientists, or for anyone hoping to develop their blogging and science writing skills.

CPD: This event has been approved by the Royal Society of Biology for purposes of CPD and can be counted as 24 CPD points.



Fees: From £100 +VAT

Please see the event webpage for [further info and booking.](#)

Presentation Skills

When: 10 April 2017 (afternoon course)

Where: Charles Darwin House 2, 107 Gray's Inn Road, London WC1X 8TZ

What: This course will cover practical exercises on personal presentation and body language; structuring your presentation; uses and abuses of visual aids with a focus on Powerpoint; and meeting the needs of your audience.

Tutor: Professor Sue Smith FRSB is professor in medical education and director of teaching at the National Heart and Lung Institute, a constituent of the Faculty of Medicine, Imperial College London.

Who: This half-day course is for those who have had little experience of giving presentations.

CPD: This event has been approved by the Royal Society of Biology for purposes of CPD and can be counted as 12 CPD points.

Fees: From 50 +VAT

Please see the event webpage for [further info and booking.](#)



An Introduction to Exhibition Design

When: 27 April 2017 (full day course)

Where: Charles Darwin House 2, 107 Gray's Inn Road, London WC1X 8TZ

What: This course will introduce participants to exhibition making, from the development of an exhibition concept to the final product.

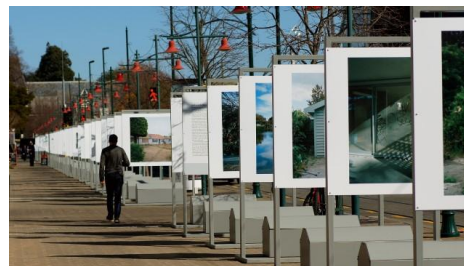
Trainer: Dr Rachel Souhami has over 20 years' experience of exhibition development, working with national and regional museums, independent organisations and exhibition design companies. Rachel has trained budding exhibition developers for over 10 years, and has lectured in science communication, museum studies and exhibition development at Imperial College London, The University of Manchester and Westminster University.

Who: This practical course is suitable for those who may need to create a display, for example science communicators or scientists working in public engagement & outreach.

CPD: This event has been approved by the Royal Society of Biology for purposes of CPD and can be counted as 21 CPD points.

Fees: From £100 +VAT

Please see our the event webpage for [further info and booking.](#)



Unconscious Bias

When: 12 May 2017 (morning course)

Where: Charles Darwin House 2, 107 Gray's Inn Road, London WC1X 8TZ

What: It is now acknowledged that in addition to eradicating discrimination and bias within an organisation it is important to consider the role of unconscious bias on individual behaviours and the impact it is having on your ability to create an open, fair and inclusive workplace culture for all.



Trainer: Sally Baker has worked in the field of diversity in both the private and public sector. She has held senior roles in corporate organisations, has been consulting on diversity for over 18 years and is regarded as senior in her field. She has been recognized for her work in diversity and was made a Chartered Fellow of the CIPD in 2005.

Who: This half day awareness building course aims to educate staff and managers so that they can lead by example in the quest to change mind-sets and create a more diverse and inclusive workplace.

CPD: This event has been approved by the Royal Society of Biology for purposes of CPD and can be counted as 15 CPD points.

Fees: From £100 + VAT

Please see our the event webpage for [further info and booking.](#)

Disability Awareness

When: 12 May 2017 (afternoon course)

Where: Charles Darwin House 2, 107 Gray's Inn Road, London WC1X 8TZ

What: Recognise visible and hidden disabilities and become more disability aware and confident.



Trainer: Sally Baker has worked in the field of diversity in both the private and public sector. She has held senior roles in corporate organisations, has been consulting on diversity for over 18 years and is regarded as senior in her field. She has been recognized for her work in diversity and was made a Chartered Fellow of the CIPD in 2005.

Who: This course is aimed at staff, managers and HR professionals.

CPD: This event has been approved by the Royal Society of Biology for purposes of CPD and can be counted as 15 CPD points.

Fees: From £100 + VAT

Please see our the event webpage for [further info and booking.](#)

Intermediate Grant Writing

When: 18 May 2017 (full day course)

Where: Charles Darwin House 2, 107 Gray's Inn Road, London WC1X 8TZ

What: Articulate your cause in a powerful and understandable way with techniques for developing and writing strong, persuasive, successful funding proposals. A must-attend course if you are writing any type of funding applications.

Tutor: Gill Jolly is a psychology graduate, who has been involved in professional fundraising for over 25 years as a fundraiser, manager and trainer of fundraisers and has worked at a senior level with some of the top income-generation charities.

Who: This course is suitable for those who need to secure funding for their work from charitable trusts and foundations and have already made some applications.

CPD: This event has been approved by the Royal Society of Biology for purposes of CPD and can be counted as 18 CPD points.

Fees: From £140 +VAT

Please see the event webpage for [further info and booking](#).



Scientific Laboratory Leadership and Management

When: 25 May 2017 (full day course)

Where: Charles Darwin House 2, 107 Gray's Inn Road, London WC1X 8TZ

What: Management skills are vital for a successful career in a scientific lab environment. As well as their research expertise, successful team leaders need to develop additional skills including the ability to support staff, manage their own team, and deal with issues within the team. This course will help attendees to develop these skills.

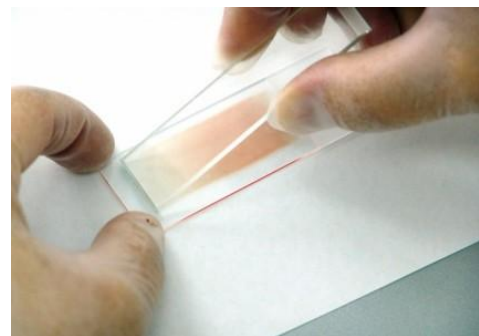
Tutor: Charlie Wilson OBE MRSB has spent the last six years as a coach and consultant in teamworking and leadership, working with industry, banks and schools. Before that he was an officer in the Royal Navy with a varied career that included everything from Defence Attaché to ship command in both peace and war.

Who: This course is suitable for laboratory team leaders and principal investigators who want to improve the way they manage their teams as well as postdoctoral researchers who have been selected for, or aspire to, promotion to team leadership positions.

CPD: This event has been approved by the Royal Society of Biology for purposes of CPD and can be counted as 21 CPD points.

Fees: From £100 +VAT

Please see the event webpage for [further info and booking](#).



Networking Skills

When: 07 June 2017 (evening course)

Where: Charles Darwin House 2, 107 Gray's Inn Road, London WC1X 8TZ

What: Throughout our careers we all have to attend meetings, conferences and events and yet 90% of us dislike this form of professional engagement. Many of us may make excuses not to engage with strangers and make small talk, and miss out on opportunities as a result.

Networking events are an excellent means of finding new contacts, gaining access to new or different information, building and nurturing existing relationships and developing opportunities.

This event will finish with a 'real life' networking opportunity, where attendees will have the opportunity to put the techniques discussed into practice.

Tutor: Heather White is a networking and personal brand expert. She is the founder and CEO of Smarter Networking and has spoken about networking at TEDxOxbridge, The Happenista Project and on Swiss radio. You can see a [video](#) of Heather in action at TEDxOxbridge [here](#).

Who:

This course is suitable for people looking: for a job; to change jobs; to develop their career; or to gain more confidence in building relationships.

CPD: This event has been approved by the Royal Society of Biology for purposes of CPD and can be counted as 7.5 CPD points.

Fees: From £55 +VAT

Please see the event webpage for [further info and booking](#).



Public engagement: Getting started

When: 12 September 2017 (full day course)

Where: Lumen URC, 88 Tavistock Place, London WC1H 9RS

What: This course will provide participants with an understanding of what public engagement is and what's in it for them. Participants will gain awareness of a range of public engagement opportunities available, and gain confidence in taking the first steps towards undertaking public engagement activities.

Tutor: Ceri Harrop is a freelance public engagement professional and currently holds freelance contracts with The Royal Society and The Nuffield Foundation. Ceri also works part-time as the Public Programmes Manager for the Wellcome Trust Centre for Cell-Matrix Research. Ceri has built a vibrant and strategic public engagement programme from scratch and works to support and enable researchers to put public engagement into practice. Ceri has a longstanding passion for public engagement, which she discovered early on in her research career as a PhD student and has continued with ever since.

Who: This course is suitable for anyone who would like to develop their knowledge, skills and confidence to take their first steps into public engagement.

CPD: This event has been approved by the Royal Society of Biology for purposes of CPD and can be counted as 15 CPD points.



Fees: From £140 +VAT

Please see the event webpage for [further info and booking](#).

An Introduction to Project Management

When: 27 September 2017 (full day course)

Where: Lumen URC, 88 Tavistock Place, London WC1H 9RS

What: Participants will learn the skills and planning tools they need to successfully complete a project, and how to anticipate and resolve the issues they are likely to encounter on the way.

Tutor: The course tutor Dr Cliff Collis FRSB worked as a communications specialist for a large drug company, working with drug development teams in knowledge/issue management for meetings with upper company managers and regulators to progress new drugs through the development process.

Who: A course for those who have recently become involved in or responsible for project management but who have limited or no experience or training.

CPD: This event has been approved by the Royal Society of Biology for purposes of CPD and can count as 21 CPD points.

Fees: From £100 +VAT

Please see the event webpage for [further info and booking](#).



Special Offer: Wildlife Conservation Programme, Nkondo Bush Academy, South Africa, Discounted places available for Royal Society of Biology Members

Where: Near Mossel Bay, South Africa

Nkondo Bush Academy would like to offer all RSB members a 20% discount for the year of 2017 on their Wildlife Conservation Program. Find exclusive details on their [website](#) or [email](#) them.



Jobs Board

[Merchandising Consultant - UK Desktop, Displays & Accessories](#)

Dell, Inc. Bracknell, NA

[Executive Secretary and Editor of Science In Parliament](#)

Parliamentary and Scientific Committee London, Greater London

[Science Policy Officer](#)

Royal Society of Biology, Greater London

[Trustee/Governor](#)

The Physiological Society London, Greater London

[View all jobs](#)



Deadlines and opportunities

Royal Society of Biology £500 student & early career researcher [travel grants](#)

Closes 1 March 2017

UK Research and Innovation Board Members

The Department for Business, Energy and Industrial Strategy (BEIS) is seeking to appoint between 9-12 Non-Executive Directors to become Members of the UK Research and Innovation (UKRI) Board. UKRI, a new, independent, non-departmental public body, will bring together the functions of the seven Research Councils, Innovate UK, and the research and knowledge exchange functions of the Higher Education Funding Council for England (HEFCE) (to be known as Research England). Apply via the Cabinet Office [website](#).

Closes 31 March 2017



Upcoming Member Organisation Training Events

Event	Date
Under Pressure: Making sense of stress	21.02.17
Meeting the Challenge of Healthy Ageing in the 21st Century	21.02.17 - 23.02.17
Ion Channels Workshop	01.03.17
Organising and operating activities in a laboratory animal facility	08.03.17 - 10.03.17
Using e-learning to improve student engagement in the biosciences: a workshop for HE educators	20.03.17
Scientific Publishing for Success: From Research to Acceptance	21.03.17
Effective teaching strategies for cancer biology	29.03.17
The 1st Biochemical Society and Against Breast Cancer Glyco Oncology Workshop	06.04.17
Protein modelling and its applications in current science	06.04.17 - 07.04.17



[Manage your subscription with MySociety](#)