

Biology Week 2016

BioSoc Quiz

Section 1 – Short Questions

One mark for each correct answer

1. In August 2016, the **Greenland shark** made headlines when it was declared the oldest (known) vertebrate animal. Approximately how long do these creatures live?

- (A) 310 years (B) 180 years (C) 250 years **(D) 400 years**

2. Which **ONE** of the following organisms is classified as **Critically Endangered** on the IUCN Red List of threatened species?



(A) Giant Panda



(B) Canary Islands Dragon Tree



(C) Black Rhinoceros

3. Which **ONE** of the following is a type of **fish**? (Contributed by the Marine Biological Association)

- (A) Starfish (B) Cuttlefish **(C) Seahorse** (D) Dolphin

4. What would you be doing if you were performing **vaccinulgence**? (Contributed by the Biochemical Society) **Milking a cow.**

5. What is the name of the pathway, consisting of 10-enzyme catalysed steps, resulting in the creation of **pyruvate**, called? **Glycolysis.**

6. What is the name of the nitrogen-containing **polysaccharide** that forms the tough exoskeletons of most arthropods? **Chitin.**

7. Animals, plants and microbes undergo behavioural and/or physiological changes over a 24-hour period; these are governed by an internal biological clock. What is this phenomenon termed? (Contributed by the British Society for Immunology). **Circadian rhythm.**

8. **Parathyroid** hormone is involved in regulating calcium levels within a healthy individual; it is produced in the parathyroid glands. Where are these glands located? In the neck behind the thyroid.

9. What condition results from having **three** copies of chromosome 21? Down syndrome.

10. What do we call the waves of **muscular contraction** which push food through the gut? Peristalsis.

/10

Section 2 - True or False?

Answer true or false to the following statements. One mark for each correct answer.

There are 100 species of bee in the UK	<i>FALSE – ABOUT 250</i>
All genes have two alleles	<i>FALSE</i>
The large intestine is the heaviest organ in the body	<i>FALSE - LIVER</i>
The average sneeze is 100 miles per hour	<i>TRUE</i>
Salbutamol is a drug commonly used to treat epilepsy	<i>FALSE - ASTHMA</i>
Bears are classified in the taxonomic family Ursidae	<i>TRUE</i>
In flower anatomy, the stamen consists of a filament and an anther	<i>TRUE</i>
The collective noun for a group of owls is 'parliament'	<i>TRUE</i>
Whales have belly buttons	<i>TRUE</i>
Each person has approximately 2 billion heart cells	<i>TRUE</i>
A sphygmomanometer is used to measure brain activity	<i>FALSE – BLOOD PRESSURE</i>
Aspirin is derived from chestnut bark	<i>FALSE - WILLOW</i>
The 'S' in MRSA stands for <i>Streptococcus</i>	<i>FALSE – STAPHYLOCOCCUS</i>
The water shrew is venomous	<i>TRUE</i>
The largest recorded snake (in captivity) is 10m long	<i>FALSE – 8</i>

/15

Section 3 - Anagrams

Solve these anagrams to reveal the names of notable diseases. One mark for a correct answer.

CAR HOLE	<i>CHOLERA</i>
TEN ACRE CRABS	<i>BREAST CANCER</i>
ELKS SENSE SPICING	<i>SLEEPING SICKNESS</i>
BULL EAR	<i>RUBELLA</i>
BUSIER LOCUST	<i>TUBERCULOSIS</i>
AM A LIAR	<i>MALARIA</i>
INHALE IS A MISS	<i>LEISHMANIASIS</i>
FEUD REVENGE	<i>DENGUE FEVER</i>
VERY FOWL EEL	<i>YELLOW FEVER</i>
SPY ROLE	<i>LEPROSY</i>

Solve these anagrams to reveal the names of types of insects. One mark for a correct answer.

TEST BEAGLE	<i>STAG BEETLE</i>
LAB HARDLY INQUIRED	<i>HARLEQUIN LADYBIRD</i>
GYMNAST IN A RIP	<i>PRAYING MANTIS</i>
NO DRY FLAG	<i>DRAGONFLY</i>
I WAGER	<i>EARWIG</i>

Solve these anagrams to reveal the names of types of tree One mark for a correct answer.

BONE HARM	<i>HORNBEAM</i>
SO CREAMY	<i>SYCAMORE</i>
I WRONGED TOAD	<i>GIANT REDWOOD</i>
CRIB SHRIVEL	<i>SILVER BIRCH</i>
SOUTH TRENCHES	<i>HORSE CHESTNUT</i>

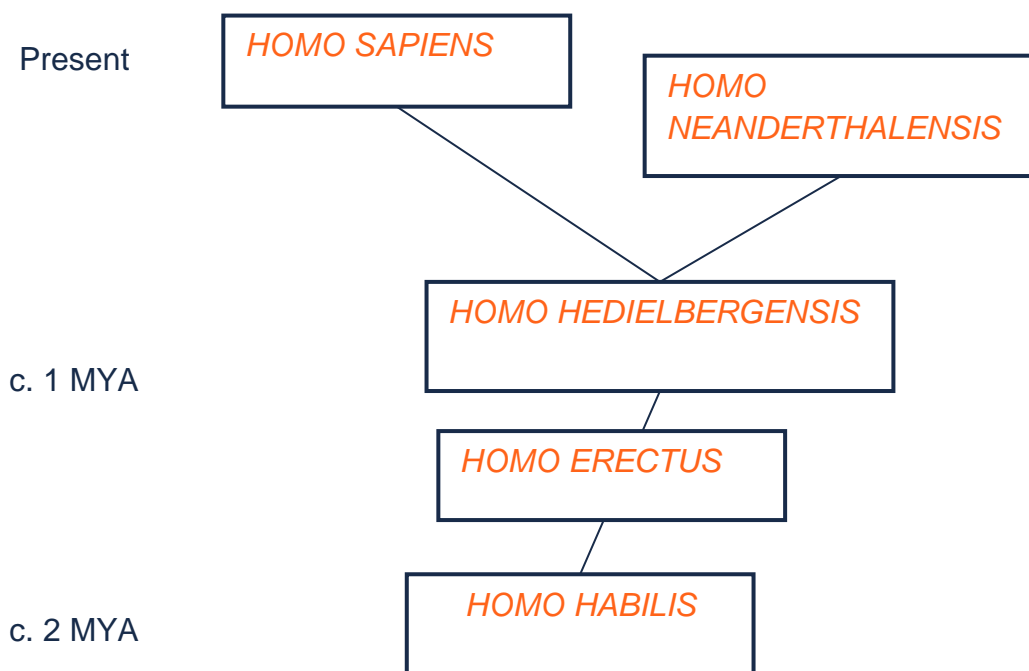
Section 4 - Fill in the gaps

/11

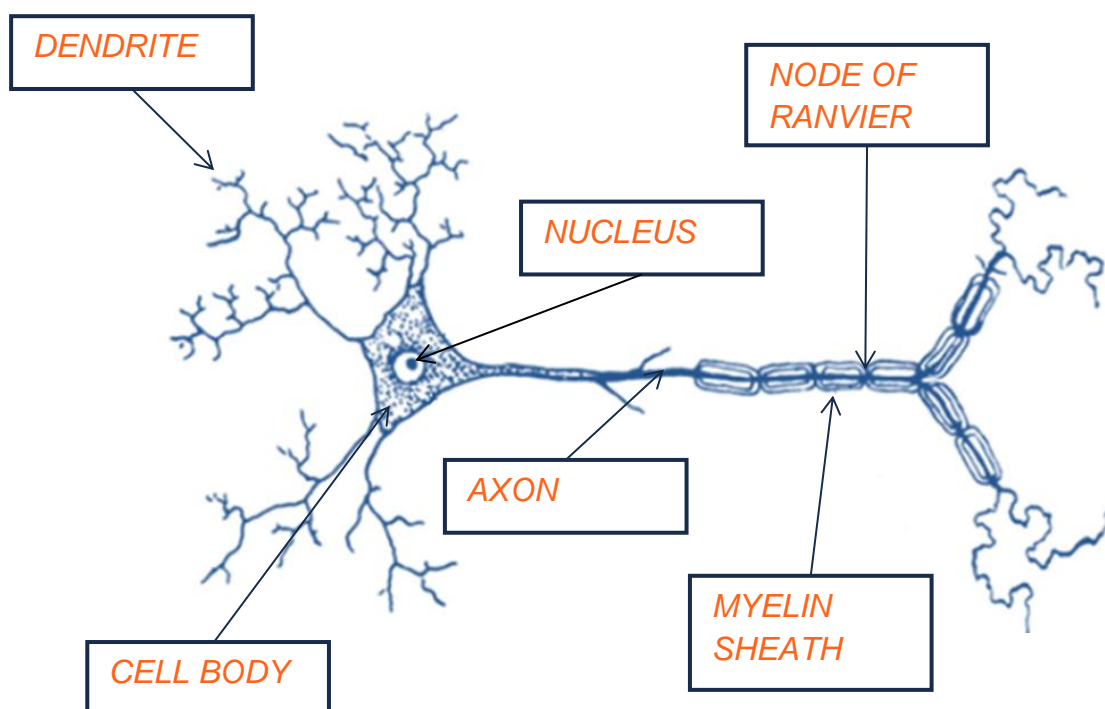
Award one mark for each correctly filled gap.

Human evolution:

Use the following: *Homo heidelbergensis*, *Homo sapiens*, *Homo erectus*, *Homo neanderthalensis*, *Homo habilis*.



Label the diagram of the motor neurone:



Section 5 - Name the biologist

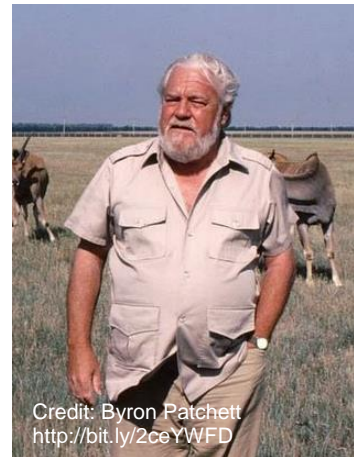
Award one mark for each correctly named biologist.



LYNN MARGULIS



JANE GOODALL



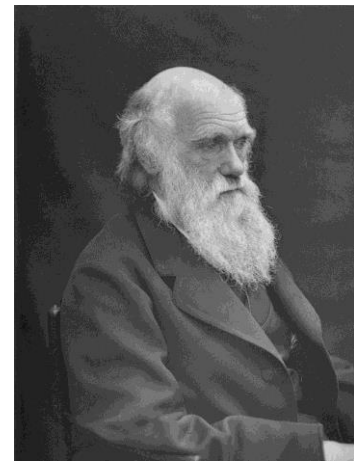
GERALD DURRELL



MARY FRANCES LYON



VENKI RAMAKRISHNAN



CHARLES DARWIN

Section 6 – Name the organism

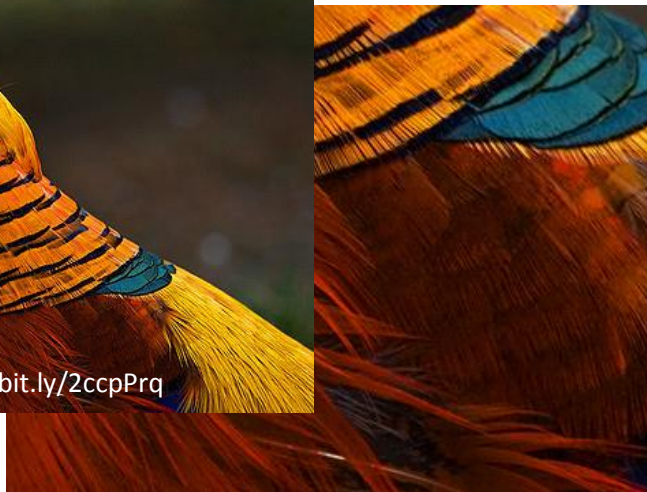
Correctly name the species from the close up images below (5 marks for each answer)

(A)



ELEPHANT HAWKMOTH

(B)



GOLDEN PHEASANT

/10

Section 7 – Caption Competition

The funniest caption for each image is awarded 5 marks.

/10

(A)



(B)





How did you do?

Let us know on Twitter @RoyalSocBio tweet #BiologyWeek

Find us on Facebook too!

Love biology? Interested in becoming a member?

Email membership@rsb.org.uk

Thank you for helping us celebrate Biology Week 2016!